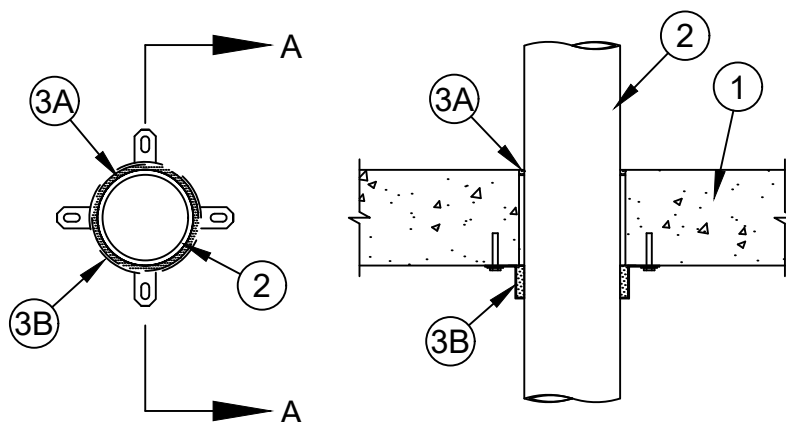




System No. C-AJ-2298

F Ratings - 2 Hr
T Ratings - 2 Hr



Section A-A

1. **Floor or Wall Assembly** - Min 4-1/2 in. thick reinforced lightweight or normal weight (100-150 pcf) concrete floor. Floor may also be constructed of any min 6 in. thick hollow-core **Precast Concrete Units***. Wall may also be constructed of any UL Classified **Concrete Blocks***. For nom 2-1/2 in. diam and smaller pipes and conduits, diam of opening shall be max 1/4 in. larger than nom pipe diam. For pipes and conduits greater than nom 2-1/2 in. diam of opening shall be max 1/2 in. larger than nom pipe diam.

See **Concrete Blocks** (CAZT) or **Precast Concrete Units** (CFTV) categories in the Fire Resistance Directory for names of manufacturers.

2. **Through Penetrants** - One nonmetallic pipe or conduit to be centered within opening with a max 1/8 in. annular space for nom 2-1/2 in. diam and smaller pipes and conduits and a max 1/4 in. annular space for pipes and conduits greater than 2-1/2 in. diam. Pipe or conduit to be rigidly supported on both sides of the floor or wall assembly. The following types and sizes of nonmetallic pipes and conduits may be used.
 - A. **Polyvinyl Chloride (PVC) Pipe** - Nom 4 in. diam (or smaller) Schedule 40 solid or cellular core PVC pipe for use in closed (process or supply) or vented (drain, waste or vent) piping systems.
 - B. **Chlorinated Polyvinyl Chloride (CPVC) Pipe** - Nom 4 in. diam (or smaller) SDR13.5 CPVC pipe for use in closed (process or supply) piping systems.
 - C. **Acrylonitrile Butadiene Styrene (ABS) Pipe** - Nom 4 in. diam (or smaller) Schedule 40 solid or cellular core ABS pipe for use in closed (process or supply) or vented (drain, waste or vent) piping systems.
 - D. **Rigid Nonmetallic Conduit+** - Nom 4 in. diam (or smaller) Schedule 40 PVC conduit installed in accordance with Article 347 of the National Electrical Code (NFPA 70).

3. **Firestop System** - The firestop system consists of the following:

- A. **Fill, Void or Cavity Material* - Sealant** - Min 1/4 in. thickness applied within annulus, flush with top surface of floor or both surfaces of wall.

SPECIFIED TECHNOLOGIES INC - SpecSeal LCI Sealant

- B. **Firestop Device*** - Galv steel collar lined with an intumescent material sized to fit the specific diam of the through penetrant. Device shall be installed around through penetrant in accordance with the accompanying installation instructions. Device incorporates anchor tabs for attachment to bottom surface of floor or both surfaces of wall assembly by means of 1/4 in. diam by min 1-1/4 in. long steel concrete screws in conjunction with min 1 in. diam steel fender washers.

SPECIFIED TECHNOLOGIES INC - SpecSeal LCC Collar or SpecSeal SSC Collar

* Bearing the UL Classification Marking

+Bearing the UL Listing Mark

* Indicates such products shall bear the UL or cUL Certification Mark for jurisdictions employing the UL or cUL Certification (such as Canada), respectively.



Specified Technologies Inc. 210 Evans Way Somerville, NJ 08876

Reproduced courtesy of Underwriters Laboratories, Inc.
Created or Revised: January 23, 2014

Distribuidor oficial en Chile: **SAFE ENERGY SPA** www.safe-energy.cl contacto@safe-energy.cl +562 26216006



C-AJ-2298
PAGE 1 OF 1